

UR-W295C

UR-W295C is narrow enough to allow access through standard size single doorway, but with 2930kg of lifting power.

UNIC original stability sensor system provides the benefit of turnover protection for safety. Its outriggers allow for independent multi-angle configurations to place at the best position in restricted or confined area. Easy and quickly installed searcher hook and fly-jib options will increase working radius and lifting height further more.

Max
8.41m
Working radius

Max
8.8m
Hook height (Approx.)
(Above ground level)

Max
2.93t
×1.4m
Lifting capacity

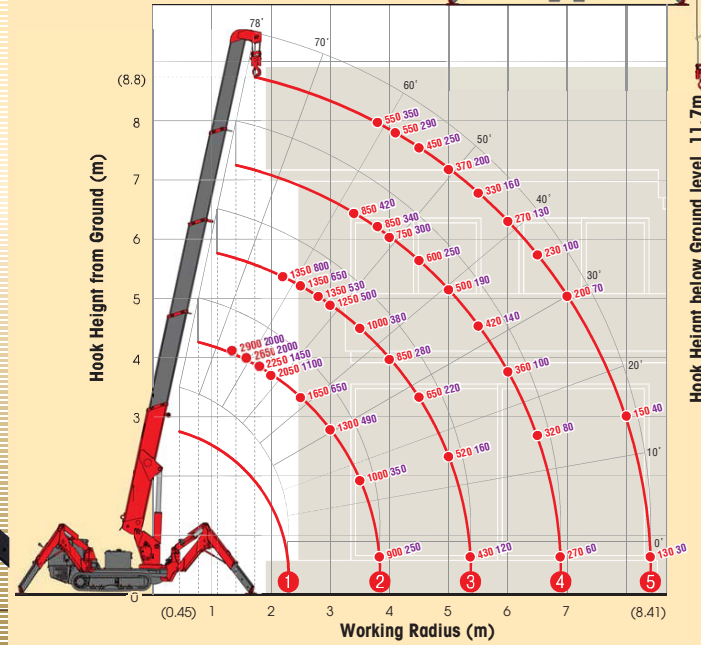
1850kg
Mass of crane



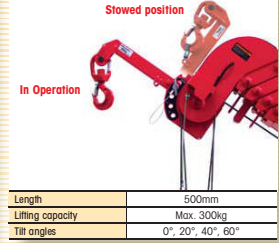
UNIC MINI-CRAWLER CRANE

WORKING RANGE & NET RATED LOADS (kg)

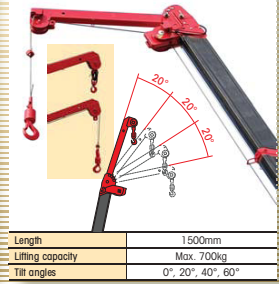
Outrigger ● Max-extended NOT max-extended



Searcher hook (Options)



Fly Jib (Options)



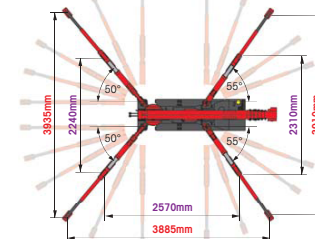
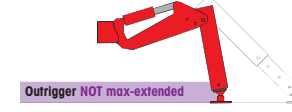
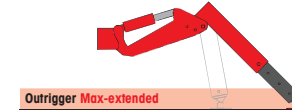
with electric power unit



SPECIFICATIONS

Crane model	UR-W295C	UR-W295CD
Lifting capacity	Max. 2.93t at 1.4m	
Working radius	Min. 0.45m, Max. 8.41m	
Hook height (Approx.)	Max. 8.8m	
Below ground level	Max. 11.7m with 4-part line	
Length	Min. 2.53m to Max. 8.65m	
Boom	Extending speed	6.12m / 20.0 sec.
	[with electric power unit]	[50Hz] 6.12m / 34.0 sec. [60Hz] 6.12m / 28.0 sec.
	Raising angle / speed	0° to 78° / 11.0 sec.
Winch	[with electric power unit]	[50Hz] 0° to 78° / 18.0 sec. [60Hz] 0° to 78° / 15.0 sec.
	Structure	5-section box beam type telescoping boom
	Single line speed	40.0m / min (at 4th layer)
Winch	[with electric power unit]	[50Hz] 22.0m / min (at 4th layer) [60Hz] 27.0m / min (at 4th layer)
	Hook speed	10.0m / min at 4th layer with 4-part line
	[with electric power unit]	[50Hz] 5.5m / min (at 4th layer with 4-part line) [60Hz] 6.7m / min (at 4th layer with 4-part line)
Slewing	Structure	Hydraulic motor driven, spur gear reduction, with automatic mechanical brake
	Wire rope	Construction: IWRC 6 x WS(26) GRADE B / Diameter x Length: 8mm x 54.0m / Breaking strength: 42.4kN (4320 kgf)
	Hook block	2.90t capacity, 2 sheaves with safety latch
Outriggers	Range	360° continuous rotation on a ball bearing race
	Speed	1.5 rpm
	Structure	Trochoid motor, worm gear reduction, spur gear reduction, and worm self-locking brake (supported by ball bearings)
Hydraulic Pump	Type	Variable delivery piston pump
	Rated pressure	21.6 MPa (220 kgf/cm ²)
	Rated delivery	38 liters/min
Hydraulic oil tank capacity	Rated revolution	2000 rpm
		27 liters
		30 liters/min
Safety devices		2600 rpm
		Pressure relief valve for hydraulic circuit / Counterbalance valves for boom raising and boom telescoping cylinders / Pilot-operated check valves for outrigger cylinders
		Boom angle indicator with load indicator / Hook safety latch / Automatic mechanical brake for winch / Automatic stop for overwinding / Overwinding alarm / Emergency stop button
		Inter-lock device of crane and crawling levers / Inter-lock device of crane and outriggers / Turn over prevention device / Level

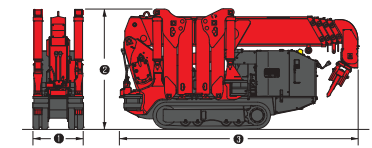
OUTRIGGER POSITIONS



CRAWLING GEAR

Crane model	UR-W295C	UR-W295CD
Crawling speed	0~2.3 km/h, forward / reverse	0~2.0 km/h, forward / reverse
[with electric power unit]	[50Hz] 0~1.2 km/h [60Hz] 0~1.4 km/h	[50Hz] 0~1.2 km/h [60Hz] 0~1.4 km/h
Hill climbing ability	20°	20°
Tread length	1050mm	1050mm
Ground contact pressure	48.0 kPa (0.49 kgf/cm ²)	49.8 kPa (0.51 kgf/cm ²)
[with electric power unit]	51.4 kPa (0.52 kgf/cm ²)	52.9 kPa (0.54 kgf/cm ²)
Engine manufacturer / model	Mitsubishi / 6M401LE	Kubota / Z482-E38
Displacement	391cc	479cc
Maximum output	9.6kW(13.0PS) / 2000 rpm, Rated output	7.4kW(10.0PS) / 2600 rpm, Rated output
Fuel	Petrol	Diesel
Fuel tank capacity	6 liters	10 liters
Steering	Hydraulic drive independent of left / right	
Starter	Starter motor (Recall starter)	

DIMENSIONS



Crane model	UR-W295C	UR-W295CD
Total width	600mm	
Total height	1375mm (1430mm)	2730mm
Total Length	2690mm	2730mm
Mass of crane	1850kg (1980kg)	1920kg (2040kg)
	[with electric power unit]	

Electric power unit specifications

Rated power	3.7kW (3-phase 4 poles)
Voltage	AC 200V or 400V (50Hz / 60Hz) 3 phase 4P